

# Habitats Block Graph

Colour a block for each animal to show the habitat it lives in.  
The first block has been shaded to help you.



© Kirsten Lies-Warfield



© naturepl.com / Mark Carwardine / WWF



© Doug Perrine / WWF



© John E. Newby / WWF



© naturepl.com / David Tipling / WWF



© Michel Gunther / WWF



© Richard Barrett / WWF-UK



© Martin Harvey / WWF



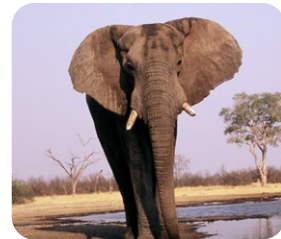
© Harm Vriend / WWF



© Jürgen Freund / WWF



© Luis Barreto / WWF-UK



© Martin Harvey / WWF



© Martin Harvey / WWF



© Luis Barreto / WWF-UK



© matthiasfr



© Doug Perrine / WWF



© Doug Perrine / WWF



© naturepl.com / Mark Carwardine / WWF

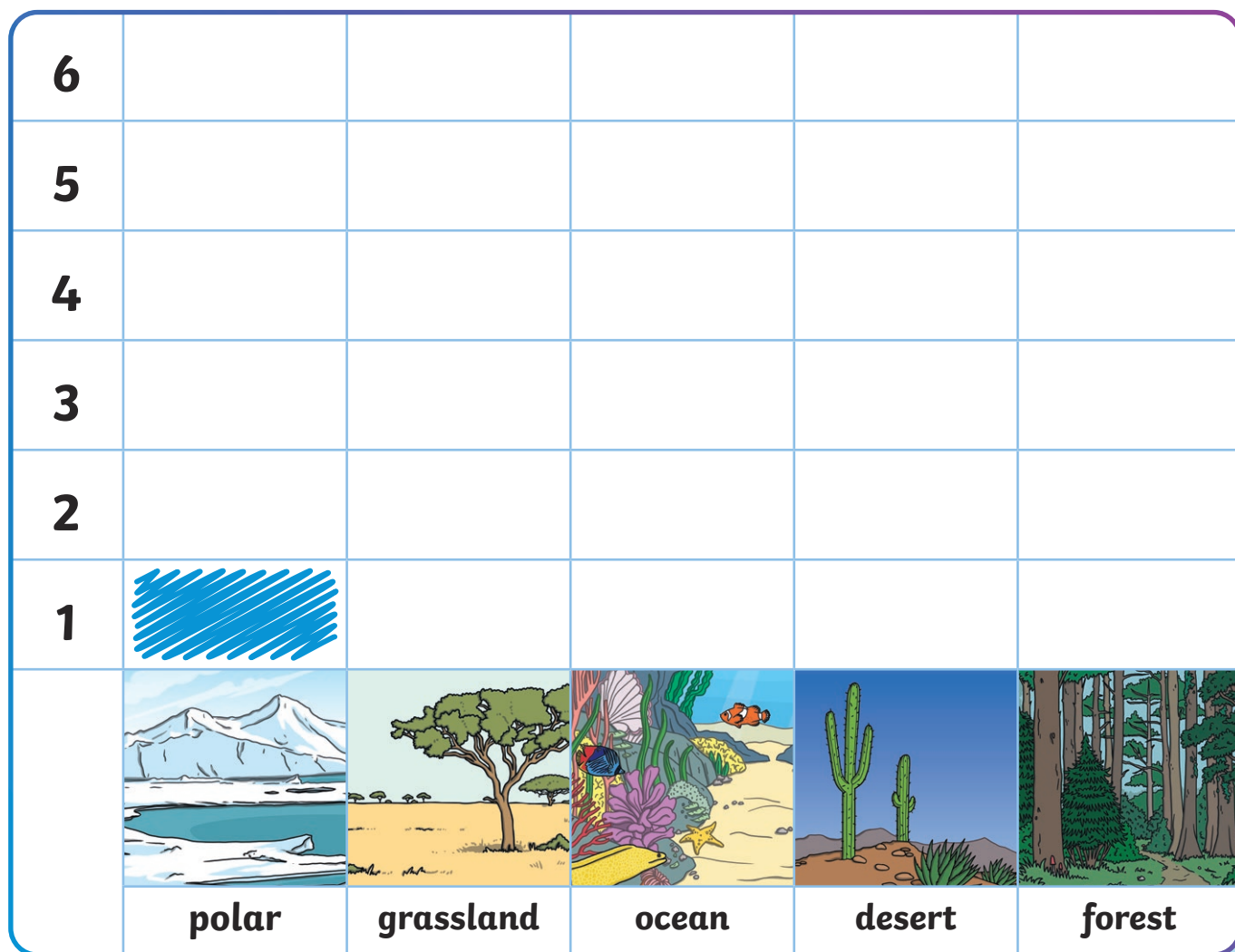


© Kirsten Lies-Warfield



© matthiasfr



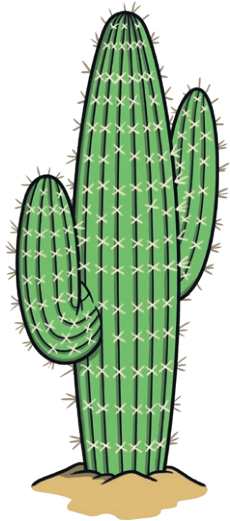


## David Attenborough's Challenge

Which two habitats are the least popular in this block graph?

---





Why do you think fewer animals might live in deserts?

---

---

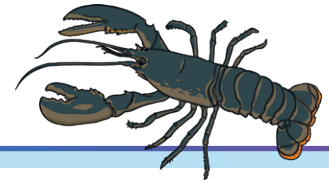
---

---

---

How many more animals are there in the ocean habitat than the polar habitat?

---



How many animals are forests home to in this block graph?

---

The Earth is warming up because of climate change. What will happen to these polar habitats?

---

---

---



Forests are home to many more animals. What are humans doing to trees that could change this?

---

---

# Habitats Block Graph Answers

6					
5					
4					
3					
2					
1					
	polar	grassland	ocean	desert	forest

**Polar:** one polar bear and one penguin

**Grassland:** one African lion, two giraffes and one African elephant

**Ocean:** three turtles, two great white sharks and one starfish

**Desert:** one camel and one fox

**Forest:** two parrots, two chimpanzees and two butterflies

## David Attenborough's Challenge - Answers

**Which two habitats are the least popular in this block graph?**

Desert and Polar

---

**Why do you think fewer animals might live in deserts?**

Deserts are hot and rainfall is low so there is little water for animals to drink in such high temperatures.

---

**How many more animals are there in the ocean habitat than the polar habitat?**

Four

---

**How many animals are forests home to in this block graph?**

Six

---

**The Earth is warming up because of climate change. What will happen to these polar habitats?**

More ice will melt into water so there will be less ice for polar animals to live on and sea levels will rise.

---

**Forests are home to many more animals. What are humans doing to trees that could change this?**

Humans are cutting down trees for timber (wood) and to make space for farming. This means there are fewer forests for animals to live in.