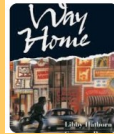


English

We will be studying the book 'Way Home.'
The children will be writing letters and diary entries as the main character Shane, writing about his adventures on the streets.

Year 6 will be using different writing styles to create short stories, some of which have a hook at the end, whilst others use speech to move story on.



Year 6

Term 4 Curriculum

Newsletter

Benin



Theme

Benin

R.E.: The children to explain connections between biblical texts and the concept of the Kingdom of God.

History: We will be studying the Empire of Benin and how it rose to power in the African continent, as well as its downfall.

Art: We will be looking at different types of sculpture from different continents. This will lead to a study of Benin sculpture and recreating their own version in clay.

Science

The children will be exploring electricity by understanding how different circuits are built and how this affects their efficiency. The children will be learning different symbols and how to draw an electric circuit.



Home Learning

Homework will be set on Friday to be handed in the following Thursday.

Attendance

We take attendance very seriously at St Paul's. Please ensure your child is in school EVERY day and on time.

Thank you.

PE

In P.E. this term, we will be learning the skills of netball. For enrichment, we will also be practicing gymnastic skills.

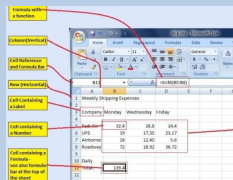
Maths

In Mathematics, we will be focusing on the number system, handling data and measures, understanding shape and securing number facts along with developing skills in algebra. Year 6 will be carrying out different maths investigations and problem solving, as well as developing our number fluency.



Computing

This term, we are looking at how spread sheets work as well as how create and use them in different ways. The children will be applying formulae to data and create formulae that has a range of cells.



General Information

Staff: Mrs Goodsell, Mrs Ball, Mr Ward, Mrs Faithweather, Miss Watson, Miss Campbell Marshall and Mrs Field

PE Kit: Your child will need their PE kit every week.
PE is on a Monday for 6KG, 6ECM and 6CW

Reading Record book: To be completed at least 4 times a week.

PSHE

Children will look at a variety of ways to become resilient with their work and life. This includes a focus on healthy living looking at the different choices we can make to have a healthy body and mind.

RSE focus — My beliefs

